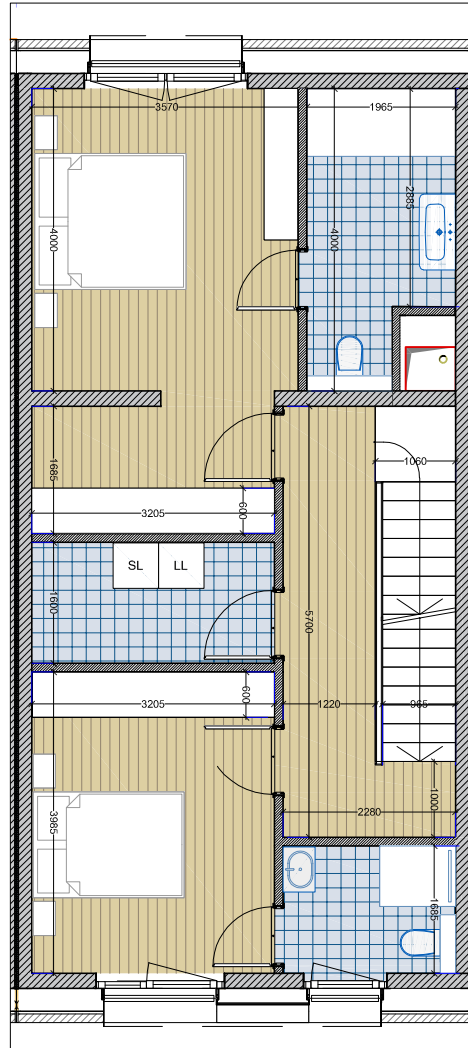
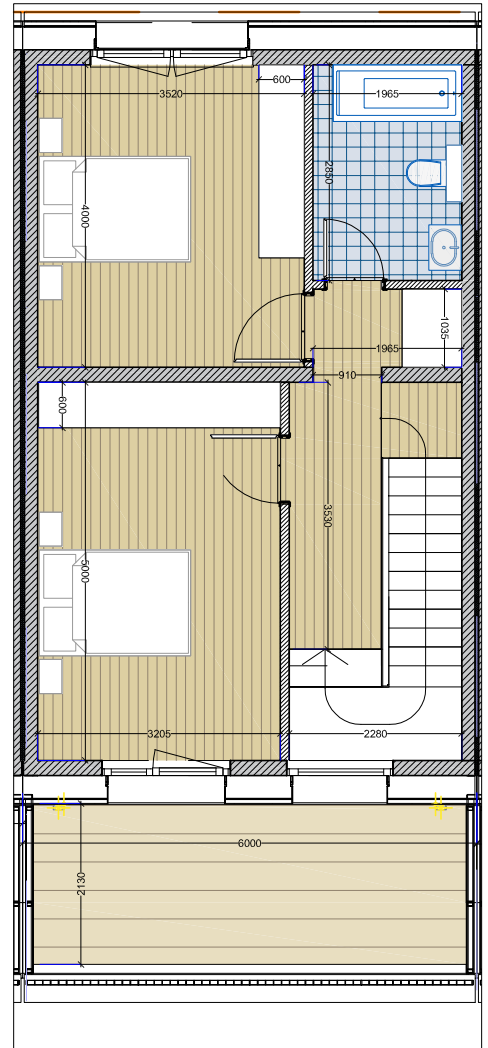


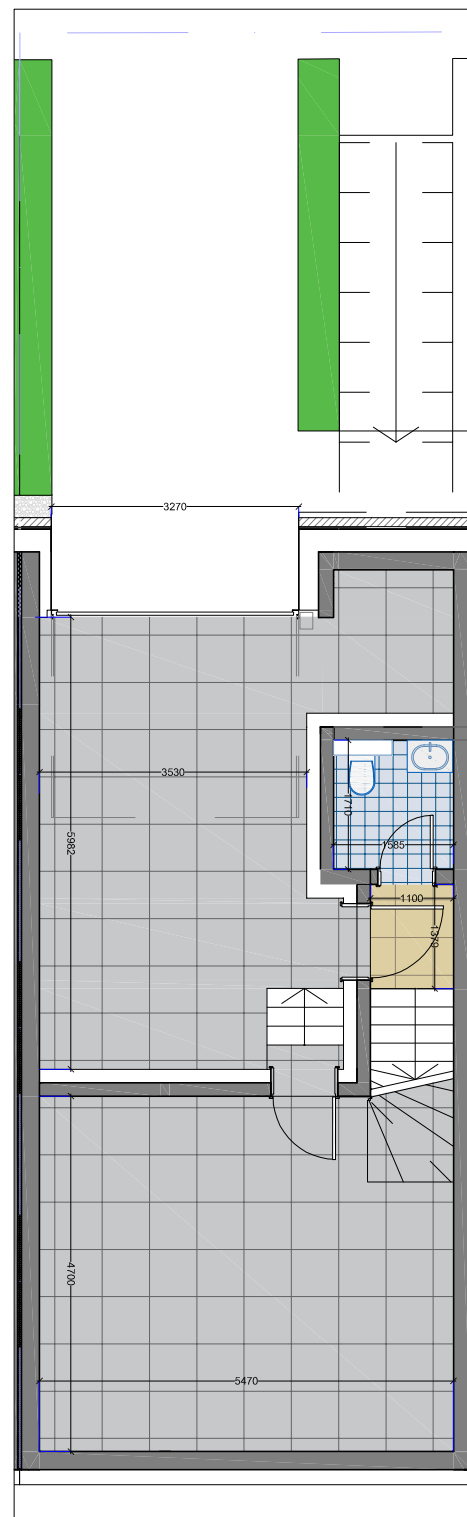
RDC



E+1



E+2



SS-1

C4.03

ARCHITECTURE: METAFORM
 ENGINEER CIVIL: SIMON CHRISTIANSEN
 TECHNIQUES: SIXT
 AMENAGEMENT EXTERIEUR: LUXPLAN

BERTRANGE DEVELOPMENT S.A.
 CITE MILLEWEE
 BERTRANGE - LUXEMBOURG

1:100

A3